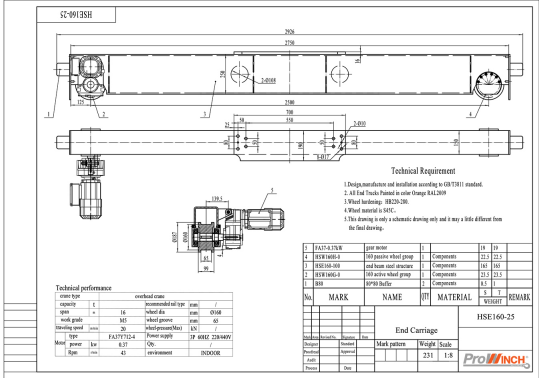


# 5 Ton Top Running Motorized End Trucks Single Girder up to 57ft Span 220/440V 3P

## Características Esenciales

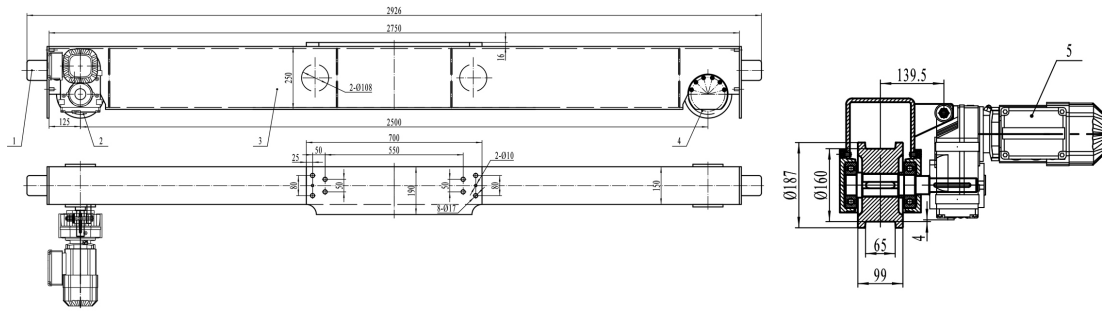
- For heavy-duty class “C” single girder crane applications
- Drives and brakes are compatible with Variable Frequency Drive (VFD)
- Suitable for use on ASCE crane rail or square bar
- 3 Años de Garantía, Servicio y Atención al Cliente en Chile



For heavy-duty class “C” single girder crane applications, Top running motorized end trucks. Include 2 trucks; 2 gear motors with D.C. brakes, rubber bumpers. All trucks are fully painted. Runway Rail ASCE # 40

## Especificaciones Técnicas

|                              |                                   |                                  |   |
|------------------------------|-----------------------------------|----------------------------------|---|
| <b>Capacidad de Carga</b>    | 5 Ton                             | <b>Freno Motor</b>               | Yes   |
| <b>Velocidad /min</b>        | 66 ft                             | <b>Protección IEC Motor</b>      | IP54  |
| <b>Numero de Velocidades</b> | 1 Speed - Optional Variable Speed | <b>Variador de Frecuencia</b>    | Optional 1.1 Kw   |
| <b>Voltaje</b>               | 3 Phase 220~240/440~480V 60Hz     | <b>Freno Dinámico</b>            | Only with VFD Optional  |
| <b>Potencia Total Watts</b>  | 0.37 x 2                          | <b>Control</b>                   | Not Included. Optional single Speed, 2 Speed and Variable Speed |
| <b>Luz Maxima</b>            | 53 Ft                             | <b>Rango de ancho de la Viga</b> | Any   |
| <b>Material</b>              | Steel                             | <b>Normas</b>                    | ASME / CMAA / Nch   |
| <b>Clase de Servicio</b>     | H4/M5/2m/Class D                  | <b>Garantía</b>                  | 3 Year  |



## Peso & Dimensiones

Largo de testera

2500 mm

Referential Images / Imágenes Referenciales  
Specifications may change without notice / las especificaciones pueden cambiar sin previo aviso