

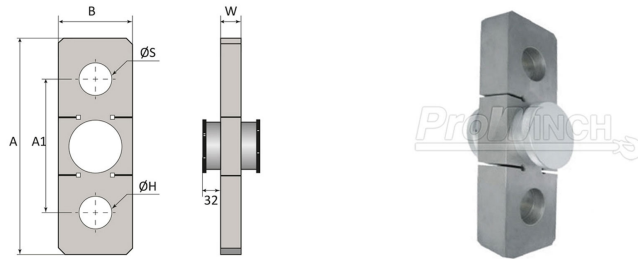
Dinamometro de linea 100 Tons IP68 Modulo largo alcance 100 Mts

Características Esenciales

- 3 Años de Garantía, Servicio y Atención al Cliente en Chile

Especificaciones Técnicas

Capacidad de Carga	220000 lb / 100 ton	Intervalos de Medición	1/2/5/10/20/50 lb/kg
Grado de Precision	Grade III / n=3000	Fuente de Alimentación del Receptor	Battery 7.4v / 8.4v charger Bateria 7.4v / Cargador 8.4v
Frecuencia Inalámbrica	430-470 MHz (1000 ft/300m)	Rango de temperatura de Trabajo	-22° - 158°F / -30° - 70° C
Tasa Conversion A/D (por seg)	≥50 times / veces	Garantía	3 Year



Model / Modelo	PWHY5T	PWHY10T	PWHY25T	PWHY50T	PWHY100T
A	9 in / 230 mm	11 in / 280 mm	14.6 in / 370 mm	16.9 in / 430 mm	22.4 in / 570 mm
A1	6.3 in / 160 mm	7.4 in / 188 mm	9 in / 230 mm	10.2 in / 260 mm	5.4 in / 340 mm
B	3 in / 76 mm	3.5 in / 90 mm	0.9 in / 125 mm	5.9 in / 150 mm	8.3 in / 210 mm
W	1.3 in / 34 mm	1.8 mm / 47 mm	2.2 in / 55 mm	2.6 in / 65 mm	4.3 in / 108 mm
ØS	1.1 in / 28 mm	1.6 in / 40 mm	2.1 in / 53 mm	2.9 in / 73 mm	4.0 in / 102 mm
ØH	0.8 in / 21 mm	1.1 in / 28 mm	2.1 in / 53 mm	2.9 in / 73 mm	4.0 in / 102 mm

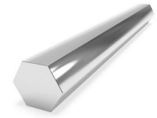
OPTIONAL:



PWHY280
Control remoto simple con visor /
Simple remote control with Display



PWHY680
Control remoto con impresora
y visor / Remote control with printer
and display



PH17-4
Acero inoxidable martensítico
endurecido por precipitación con
adiciones de Cu y Nb/Cb.
Alta resistencia a la corrosión.
Puede ser sumergido en agua por
un largo período de tiempo /
Precipitation hardening martensitic
stainless steel with Cu and Nb/Cb
additions.
High corrosion resistance.
Can be submerged in water for a
long period of time

Nominal Size / Dimensión Nominal	Capacity of Load Cell / Capacidad de la Celda de Carga	WLL	Weight / Peso	A	B	C	D	E	F	H	L	N	G	A
7/8 in 22.2 mm	11023 lb / 5t	14330 lb / 6.5 t	3.94 lb / 1.79 kg	1.44 in	1 in	3.30 in	0.88 in	2.28 in	2.08 in	5.82 in	4.01 in	0.96 in	0.25 in	0.05 in
				36.6 mm	25.4 mm	84 mm	22.4 mm	58 mm	53 mm	148 mm	102 mm	24.6 mm	6.35 mm	1.5 mm
1-1/4 in - 6.35 mm	22046 lb / 10t	26455 lb / 12 t	11.7lb / 5.31 kg	2.02 in	1.38 in	4.68 in	1.25 in	3.24 in	2.99 in	8.26 in	5.74 in	1.38 in	0.25 in	0.05 in
				51.5 mm	35.1 mm	119 mm	31.8 mm	82.5 mm	76 mm	210 mm	146 mm	35.1 mm	6.35 mm	1.5 mm
1-3/4 25 - 19 mm	55115 lb / 25 t	55115 lb / 25 t	33.9 lb / 15.4 kg	2.87 in	2 in	7 in	1.75 in	5 in	4.17 in	12.3 in	8.85 in	2.24 in	0.25 in	0.12 in
				73 mm	51 mm	178 mm	44.5 mm	127 mm	106 mm	313 mm	225 mm	57 mm	6.35 mm	3.3 mm
2-1/2 12.7 - 50 mm	110231 lb / 50 t	121254 lb / 55 t	98.3 lb / 44.6 kg	4.13 in	2.75 in	10.51 in	2.61 in	7.24 in	5.70 in	17.8 in	12.8 in	3.12 in	0.25 in	
				105 mm	70 mm	267 mm	66.5 mm	184 mm	145 mm	453 mm	327 mm	79.5 mm	6.35 mm	
3-1/2 50 - 76 mm	220462 lb / 100 t	264 lb / 120 t	264 lb / 120 kg	5.23 in	3.75 in	14.6 in	3.62 in	9.01 in	7.99 in	24.6 in	16.4 in	4.13 in	0.25 in	
				133 mm	95.5 mm	372 mm	92 mm	229 mm	203 mm	626 mm	419 mm	105 mm	6.35 mm	

Peso & Dimensiones

Peso Total 264 lbs / 120 Kg

Detalles del Empaque

Paquete 1 Peso Neto 264 lbs / 120 Kg

Paquete 1 Ancho 3 in / 7.62 cm

Paquete 1 Peso Bruto 264 lbs / 120 Kg

Paquete 1 Altura 8 in / 20.32 cm

Paquete 1 Profundidad 17 in / 43.18 cm

Referential Images / Imágenes Referenciales
Specifications may change without notice / las especificaciones pueden cambiar sin previo aviso